



*Experience, Trust, Service*

# APOLLO 600 ABRASIVE BLASTING RESPIRATOR



## PART NUMBERS AND SCHEMATICS GUIDE

## Company Profile

Since 1944, Marco has developed a strong tradition of providing innovative and reliable products and services to the surface preparation and protective coatings industries. We are the world's premier provider of Abrasives, Blasting Equipment, Coating Equipment, Engineered Systems, Rental Equipment, Safety Equipment, Service, and Repair.

Through innovative designs and a total commitment to quality, Marco manufactures products that increase production rates, create a safer workplace, and reduce maintenance costs. Marco's industry experience, manufacturing capabilities, legendary customer service, product availability, logistics services, and technology leadership is your assurance that we deliver high quality products and services, providing the best value to you, our customer.

## The Marco Difference

- **Industry Experience** – With Marco on your team, you have access to expertise which can only come from decades of industry leadership. We have organized our engineering department, production specialists, customer operations, and safety support into a "Center of Competence." As a Marco customer, you have access to hundreds of years of cumulative experience related to your operations.
- **Manufacturing Excellence** – Marco is a U.S. based, ISO 9001:2008 certified manufacturer of equipment for the Surface Preparation and Protective Coatings industries. Marco's engineers benchmark the industry to ensure that we design and manufacture superior products that set the "Gold Standard" for performance, safety, and quality.
- **Legendary Customer Service** – Marco's legendary customer service team is staffed by friendly, highly-trained individuals who are focused on providing the highest level of product support, order accuracy, and customer satisfaction.
- **Product Availability** – We stock over 10,000 SKU's and have over 45 shipping locations to serve North American and International markets for all major brands of blasting and painting equipment. As the largest provider of surface preparation and protective coatings equipment in the world, our inventory levels and product availability are unmatched.
- **Logistics Services** – Marco's in-house logistics team is dedicated to moving your shipment anywhere in the world. We move over 14,000 truckloads every year, allowing you to save on freight costs by leveraging our buying power. Lower your process costs with a single invoice, which includes product and freight.
- **Technology Leadership** – Our website provides: Operator's Manuals, Part Numbers and Schematics Guides, MSDS information, and Features and Specifications Guides, providing access to information 24/7. Our Extranet application allows you to receive quotes and place orders online. Our Intranet maintains a complete record of your purchase history to assist with ongoing support of your existing equipment and future purchasing decisions.

## Vision Statement

Marco is the world's premier provider of Abrasives, Blasting Equipment, Coating Equipment, Engineered Systems, Rental Equipment, Safety Equipment, Service, and Repair.

## Mission Statement

Marco provides strong leadership and innovation to the surface preparation and protective coatings industries. We dedicate our efforts to the continuous improvement of our products, services, processes, people, and most importantly, the quality of our customer's experience.

## Quality Statement

Marco is committed to providing superior quality in the design, manufacturing, distribution, rental, service, and repair of our products. Our ISO 9001:2008 certification extends throughout all operations in all locations. Continuous improvement of our processes and supply chain Integration comprise the core of our business strategy for delivering exceptional quality and value in all Marco products and services.

## Management Philosophy

We are a company dedicated to the success of every customer and associate. We discuss, debate, challenge, measure, and test our ideas. We will be boundless and limitless in our passion to improve. Through sound leadership and dedicated associates, we will ensure a long term, profitable future for Marco, our associates, customers, and suppliers.

# TABLE OF CONTENTS

<b>Table of Contents</b> .....	<b>3</b>
<b>Apollo 600 Abrasive Blasting</b>	
<b>Respirator</b> .....	<b>4-12</b>
Part Numbers .....	4
Lenses .....	5
Inner Lenses .....	5
Outer Lenses .....	5
Tear-off Lenses .....	5
Climate Control Devices .....	5
High Pressure Abrasive Blasting Respirator	
Part Numbers & Schematics .....	6-7
Low Pressure Abrasive Blasting Respirator	
Part Numbers & Schematics .....	8-9
Climate Control Devices .....	10-13
Clem-Cool Air Conditioner Tube	
Part Numbers & Schematics .....	10
Cool-Air Tube Assembly	
Part Numbers & Schematics .....	11
Climate Control Hot/Cold Tube	
Part Numbers & Schematics .....	12-13
Breathing Line and Couplings .....	14
Breathing Line .....	14
Couplings and Quick-Disconnects .....	14
<b>Maintenance Notes</b> .....	<b>15</b>

## PART NUMBERS

Part Numbers	APOLLO 600 ABRASIVE BLASTING RESPIRATORS							
	For Use with Compressed Air	For Use with Ambient-Air Pump	Breathing Tube	Belt	Cape	Headband Suspension	Air Flow Fitting	Climate Control Device
10C24001	X		10C22811	10C04430	10C23818 28" Silver/Grey	10C23802 (Web Suspension)	10C21415 (Constant Flow)	
10C24002	X		10C22811	10C04430	10C23818 28" Silver/Grey	10C23802 (Web Suspension)	10C100024 (Adjustable Flow)	
10C25190	X		10C22811	10C04430	10C23818 28" Silver/Grey	10C25189 (DLX Suspension)	10C21415 (Constant Flow)	
10C25191	X		10C22811	10C04430	10C23818 28" Silver/Grey	10C25189 (DLX Suspension)	10C100024 (Adjustable Flow)	
10C25194	X		10C22811	10C04430	10C23818 28" Silver/Grey	10C25189 (DLX Suspension)		10C23825 Clem-Cool Air Conditioner
10C25192	X		10C22811	10C04430	10C23818 28" Silver/Grey	10C25189 (DLX Suspension)		10C04410 Cool-Air Tube
10C25193	X		10C22811	10C04430	10C23818 28" Silver/Grey	10C25189 (DLX Suspension)		10C04411 Climate Control Hot/Cold Tube
10C24010		X	10C22811	10C04430	10C23818 28" Silver/Grey	10C23802 (Web Suspension)	10C21429 (Constant Flow)	
10C25195		X	10C22811	10C04430	10C23818 28" Silver/Grey	10C25189 (DLX Suspension)	10C21429 (Constant Flow)	



10C24001  
10C24002  
10C24010



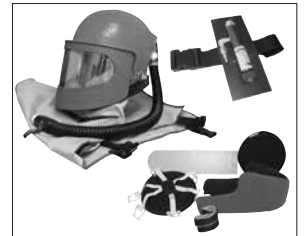
10C25190  
10C25191  
10C25195



10C25194



10C25192



10C25193

## LENSES AND CLIMATE CONTROL DEVICES



### Part Numbers

APOLLO 600 ABRASIVE BLASTING RESPIRATOR INNER LENSES						
Style	Lens Style	Dimensions	Thickness	Material	U.O.M.	
1060041	Alternative	Inner	14-3/8" x 5-7/16"	.040"	PETG	25/Pk
10C23065	Clemco	Inner	14-3/8" x 5-7/16"	.040"	Acetate	5/Pk



### Part Numbers

APOLLO 600 ABRASIVE BLASTING RESPIRATOR OUTER LENSES						
Style	Lens Style	Dimensions	Thickness	Material	U.O.M.	
106002	Alternative	Two-Sided Outer	17" x 5-5/8"	.020"	PETG	25/Pk
10C23067	Clemco	Two-Sided Outer	17" x 5-5/8"	.020"	Acetate	25/Pk



### Part Numbers

APOLLO 600 ABRASIVE BLASTING RESPIRATOR TEAR-OFF LENSES						
Style	Lens Style	Dimensions	Thickness	Material	U.O.M.	
1060004	Alternative	Perforated Tear-Off	16-7/8" x 5-3/4"	.004"	PETG	25/Pk
1060007	Alternative	Perforated Tear-Off	16-7/8" x 5-3/4"	.007"	PETG	25/Pk
10C23064	Clemco	Perforated Tear-Off	16-7/8" x 5-3/4"	.0075"	Acetate	25/Pk

### Part Numbers

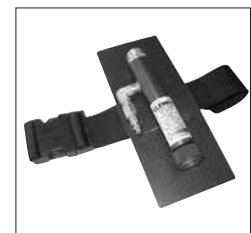
CLEMCO CLIMATE CONTROL DEVICES	
10C04411	Climate Control Hot/Cold Tube with Belt 10C04430
10C23825	Clem-Cool Air Conditioner with Belt 10C04430
10C04410	Cool-Air Tube with Belt 10C04430



10C04411



10C23825



10C04410

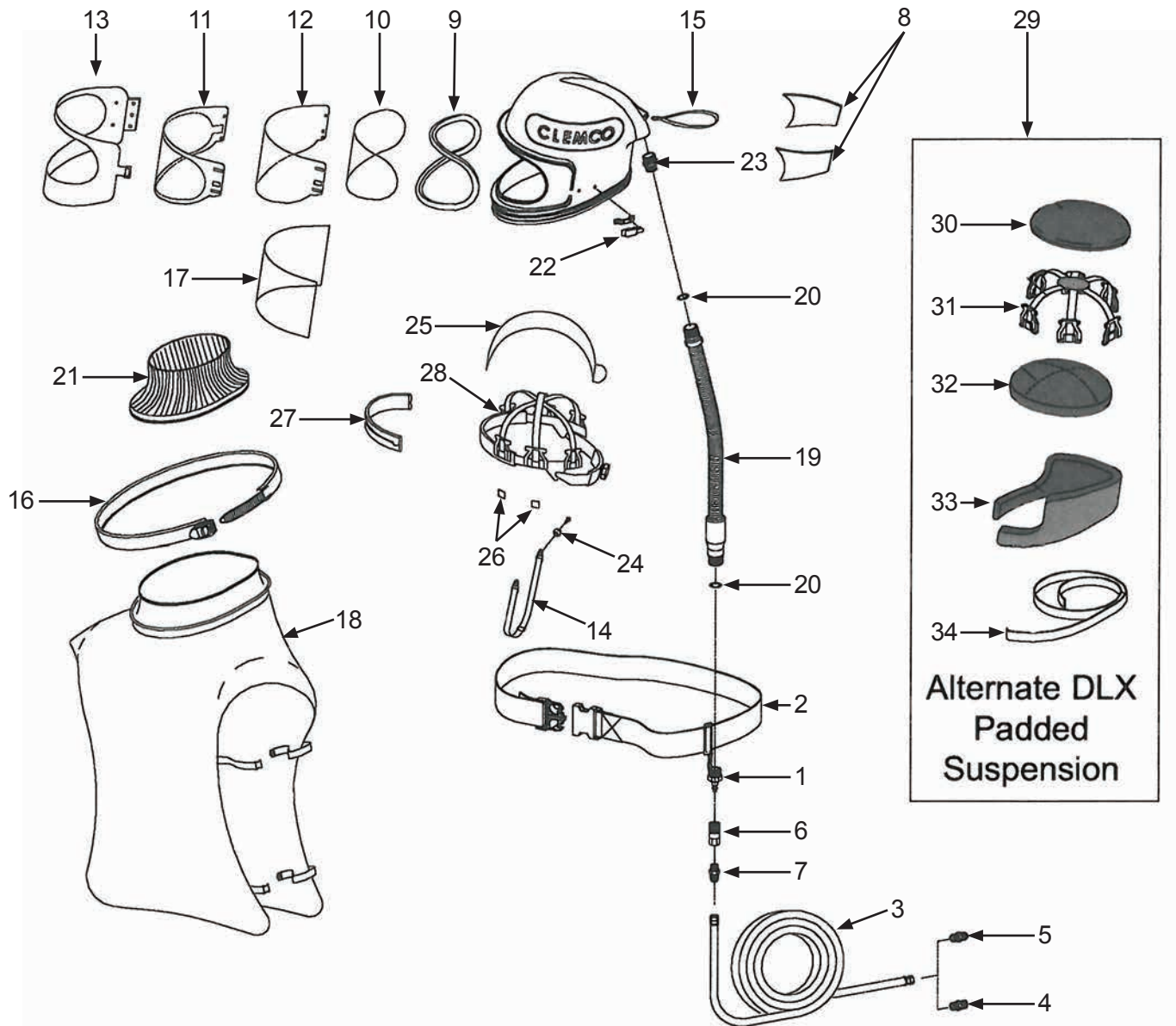
## PART NUMBERS & SCHEMATICS

### Apollo 600 High Pressure Abrasive Blasting Respirator

Item #	Part #	Description
<b>Fig. 1</b>		
1	10C21415	Constant-Flow Connector, High Pressure without Belt
2	10C04430	Belt
3	10C04397	3/8" x 25 Feet of Breathing Line <i>(Includes Item #'s: 6 and 7)</i>
	10C04415	3/8" x 50 Feet of Breathing Line <i>(Includes Item #'s: 6 and 7)</i>
	10C04398	3/8" x 100 Feet of Breathing Line <i>(Includes Item #'s: 6 and 7)</i>
4	10BV13	3/8" Male NPT Pipe Thread to 3/8" Male Hose Adapter Hex Nipple
5	10BV11	3/8" Male x 3/8" Male Hose to Hose Connector Hex Nipple
6	10BV14	1/4" Female Quick-Disconnect Coupling, Shut-Off with 1/4" Female Pipe Thread
7	10BV12	3/8" Male NPT Pipe Thread to 1/4" Male Hose Adapter Hex Nipple
8	10C04369	Acoustical Foam Kit Sides
9	10C23819	Window Gasket
10a	106004I	Alternative Inner Lens, .040" Thickness <i>(See Page 5)</i>
10b	10C23065	Inner Lens, .040" Thickness <i>(See Page 5)</i>
11a	1060004	Alternative Tear-Off Lens, .004" Thickness <i>(See Page 5)</i>
11b	1060007	Alternative Tear-Off Lens, .007" Thickness <i>(See Page 5)</i>
11c	10C23064	Tear-Off Lens, .0075" Thickness <i>(See Page 5)</i>
12a	106002	Alternative Outer Lens, .020" Thickness <i>(See Page 5)</i>
12b	10C23067	Outer Lens, .020" Thickness <i>(See Page 5)</i>
13	10C24012	Window Frame with Screws
14	10C04460	Adjustable Chin Strap
15	10C03623	Handle Strap
16	10C23801	Cape Attachment Strap
17	10C24005	Rectangular Outer Lens <i>(Optional)</i>
18	10C23818	Cape, Silver/Grey, with Red Inner Collar
—	10C23818B	Cape, Silver/Grey, with Red Inner Collar <i>(Alternative)</i>
19	10C22811	Breathing Tube With Swivel Ends
20	10C22815	O-Ring, 11/16" I.D. x 7/8" O.D. <i>(Two Required)</i>
21	10C08740	Inner Collar
22	10C24006	Window Latch Kit <i>(Includes: Base and Screws)</i>
23	10C23804	Inlet Fitting
24	10C24008	Chin Strap Fasteners <i>(Two Required)</i>
25	10C23811	Partition, Air Baffle
26	10C24773	Suspension Clips <i>(Quantity of Four)</i>
27	10C23817	Sweatband <i>(For use with item #28)</i>
28	10C23802	Web Suspension with Sweatband <i>(Alternative to DLX Padded Suspension)</i>
29	10C25189	DLX Padded Suspension Kit <i>(Alternative to Web Suspension)</i> <i>(Includes Item #'s: 30, 31, 32, 33, and 34)</i>
30	10C25181	Top Pad
31	10C25184	Suspension Web
32	10C25182	Middle Pad
33a	10C25183	Pad, Side Black/Grey, Fits Most Heads
33b	10C25187	Pad, Side Black/Blue, Fits Smaller Heads
34	10C24656	Velcro® Tape, 1" Wide with Adhesive Back, 3 Feet
—	10C04411	Climate Control Hot/Cold Tube with Belt 10C04430
—	10C23825	Clem-Cool Air Conditioner with Belt 10C04430
—	10C04410	Cool-Air Tube with Belt 10C04430

## PART NUMBERS & SCHEMATICS

Figure 1: Apollo 600 High Pressure Abrasive Blasting Respirator



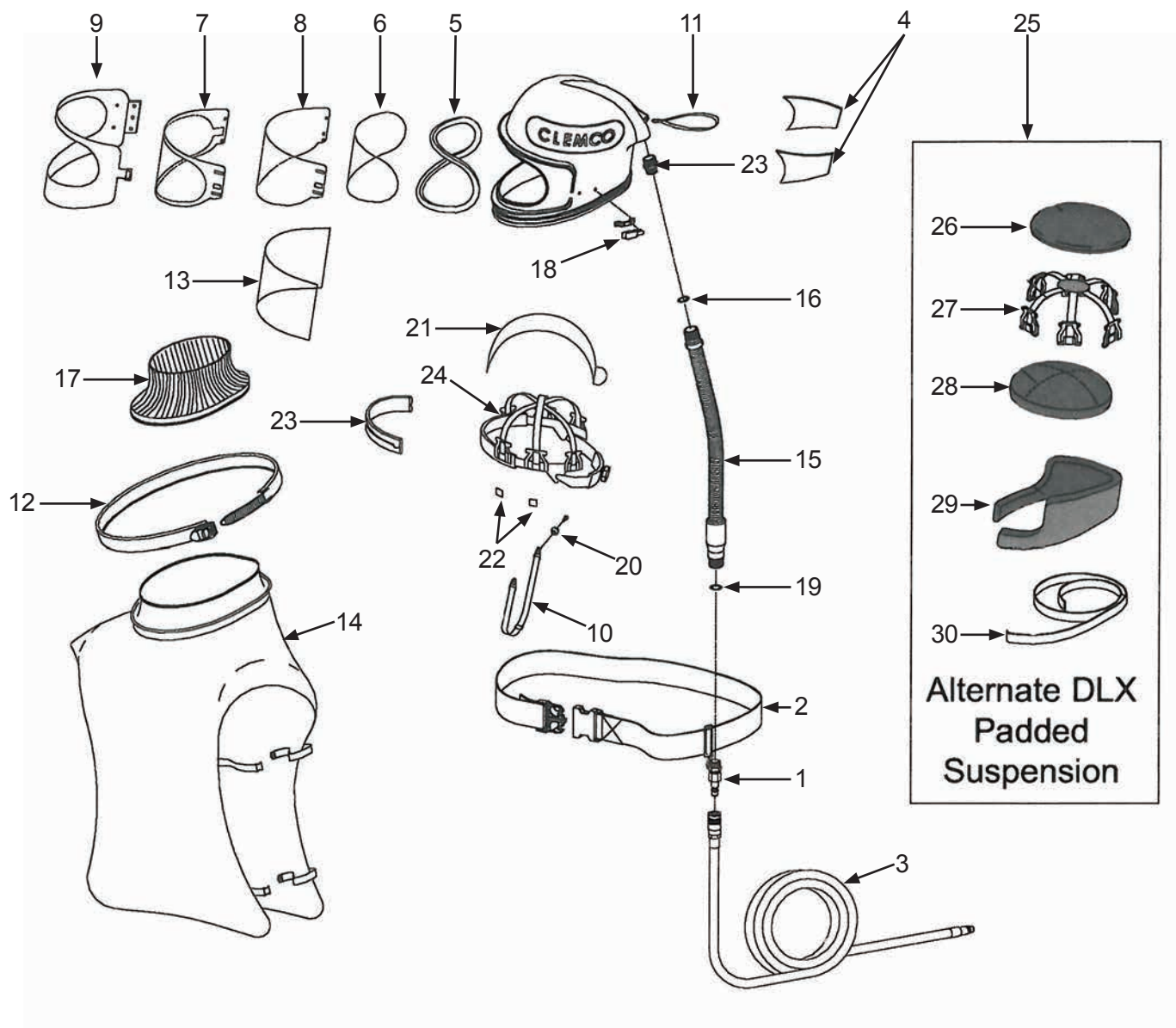
## PART NUMBERS & SCHEMATICS

### Apollo 600 Low Pressure Abrasive Blasting Respirator

Item #	Part #	Description
<b>Fig. 2</b>		
1	10C21415	Constant-Flow Connector, Low Pressure without Belt
2	10C04430	Belt
3a	10C22510	1/2" x 50 Feet of Breathing Line
3b	10C21413	1/2" x 100 Feet of Breathing Line
4	10C04369	Acoustical Foam Kit Sides
5	10C23819	Window Gasket
6a	106004I	Alternative Inner Lens, .040" Thickness ( <i>See Page 5</i> )
6b	10C23065	Inner Lens, .040" Thickness ( <i>See Page 5</i> )
7a	1060004	Alternative Tear-Off Lens, .004" Thickness ( <i>See Page 5</i> )
7b	1060007	Alternative Tear-Off Lens, .007" Thickness ( <i>See Page 5</i> )
7c	10C25021	Tear-Off Lens, .0075" Thickness ( <i>See Page 5</i> )
8a	106002	Alternative Outer Lens, .020" Thickness ( <i>See Page 5</i> )
8b	10C23067	Outer Lens, .020" Thickness ( <i>See Page 5</i> )
9	10C24012	Window Frame with Screws
10	10C04460	Adjustable Chin Strap
11	10C03623	Handle Strap
12	10C23801	Cape Attachment Strap
13	10C24005	Rectangular Outer Lens ( <i>Optional</i> )
14	10C23818	Cape, Silver/Grey, With Red Inner Collar
15	10C22811	Breathing Tube With Swivel Ends
16	10C22815	O-Ring, 11/16" I.D. x 7/8" O.D. ( <i>Two Required</i> )
17	10C08740	Inner Collar
18	10C24006	Window Latch Kit ( <i>Includes: Base and Screws</i> )
19	10C23804	Inlet Fitting
20	10C24008	Chin Strap Fasteners ( <i>Two Required</i> )
21	10C23811	Partition, Air Baffle
22	10C24773	Suspension Clips ( <i>Quantity of Four</i> )
23	10C23817	Sweatband ( <i>For use with item #24</i> )
24	10C23802	Web Suspension With Sweatband ( <i>Alternative to DLX Padded Suspension</i> )
25	10C25189	DLX Padded Suspension Kit ( <i>Alternative to Web Suspension</i> ) ( <i>Includes Item #'s: 26, 27, 28, 29, and 30</i> )
26	10C25181	Top Pad
27	10C25184	Suspension Web
28	10C25182	Middle Pad
29a	10C25183	Pad, Side Black/Grey, Fits Most Heads
29b	10C25187	Pad, Side Black/Blue, Fits Smaller Heads
30	10C24656	Velcro® Tape, 1" Wide with Adhesive Back, 3 Feet

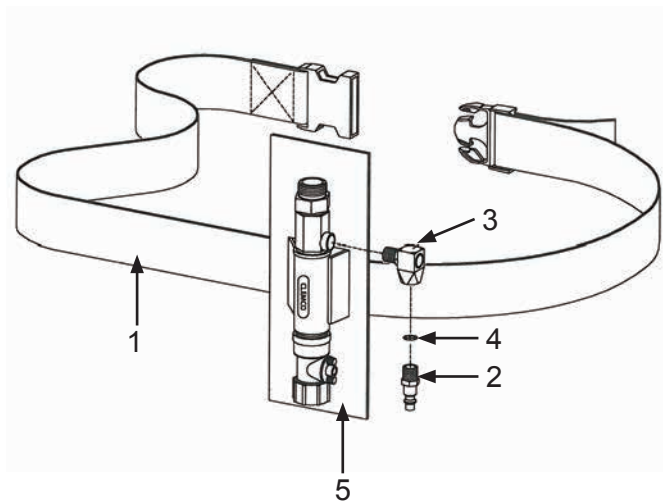
## PART NUMBERS & SCHEMATICS

Figure 2: Apollo 600 Low Pressure Abrasive Blasting Respirator



PART NUMBERS & SCHEMATICS

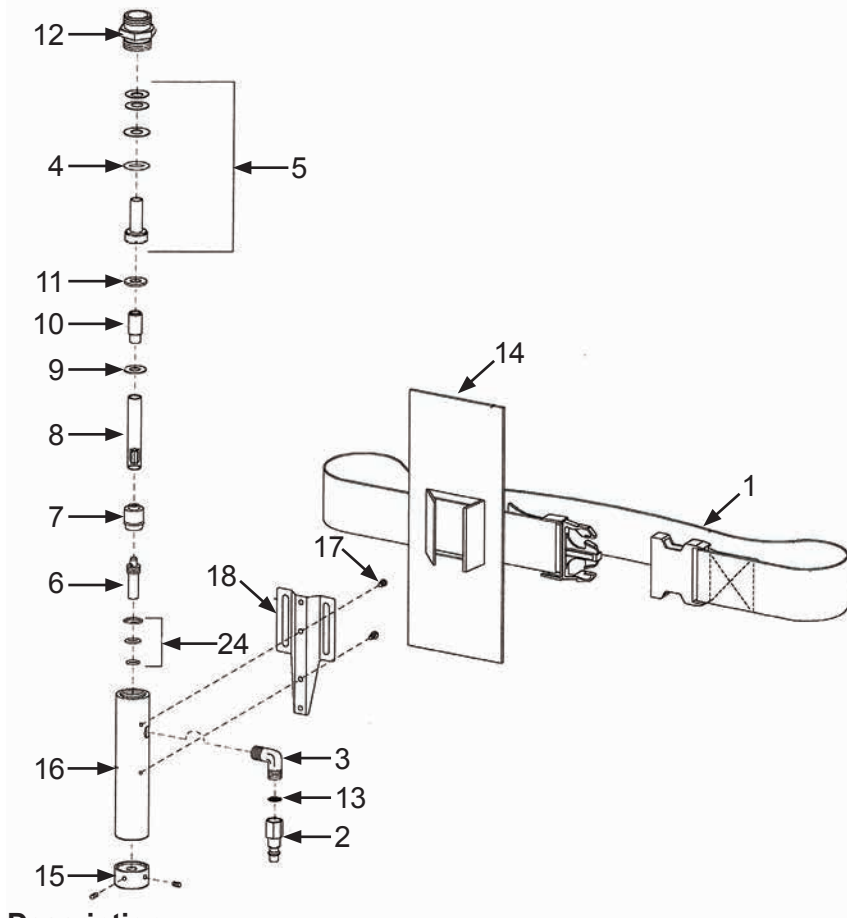
Figure 3: Apollo Clem-Cool Air Conditioner with Belt



Item #	Part #	Description
<b>Fig. 3</b>		
—	<b>10C23825</b>	<b>Clem-Cool Air Conditioner with Belt 10C04430</b>
1	10C04430	Belt
2	10C00015	Quick-Disconnect x 1/4" Male NPT
3	10C23829	Elbow, 1/4" NPT Swivel
4	10C08973	Screen
5	10C08981	Heat Shield

## PART NUMBERS & SCHEMATICS

Figure 4: Apollo Cool-Air Tube with Belt



Item #	Part #	Description
--------	--------	-------------

Fig. 4

—	<b>10C04410</b>	<b>Cool-Air Tube with Belt 10C04430</b>
1	10C04430	Belt
2	10C08449	Quick-Disconnect x 1/4" Female NPT
3	10C08869	Elbow, 1/4" Male
4	10C08870	Seal Kit (Includes: O-Rings (Quantity Of 4); And Item #6)
5	10C08871	Cool-End Venturi Kit (Includes: Cool-End Venturi O-Ring (Not Shown))
6	10C08962	Valve Stem
7	10C08963	Valve Insert
8	10C23030	Vortex Tube Assembly
9	10C08966	Narrow Spacer
10	10C08967	Venturi Tube
11	10C08968	Wide Spacer
12	10C08971	Helmet Tube Connection
13	10C08973	Screen
14	10C08981	Heat Shield
15	10C08985	Knob With Set Screws
16	10C08961	Body
17	10C08980	Machine Screw, Round Head 10-24 x 1/4"
18	10C08974	Belt Clip

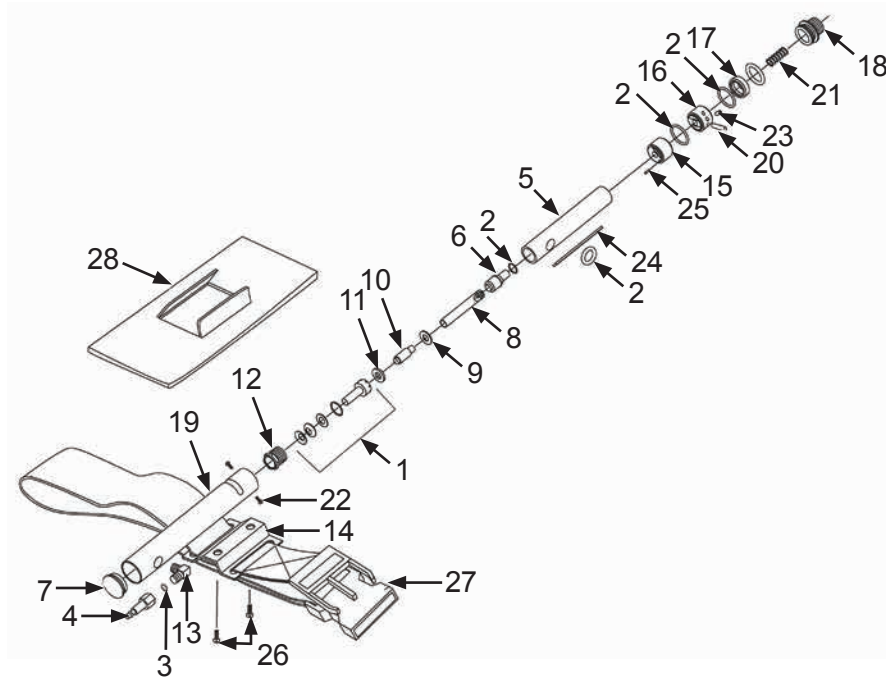
## PART NUMBERS & SCHEMATICS

### Apollo Climate Control Hot/Cold Tube with Belt

Item #	Part #	Description
<b>Fig. 5</b>		
—	<b>10C04411</b>	<b>Climate Control Hot/Cold Tube with Belt 10C04430</b>
1	10C08846	Cool-End Venturi <i>(Includes Cool-End Venturi O-Ring (Not Shown))</i>
2	10C08845	Seal Kit <i>(Includes O-Rings (Quantity of 6) and Seals (Not Shown))</i>
3	10C08983	Screen
4	10C08449	Quick-Disconnect x 1/4" Female NPT
5	10C08825	Body
6	10C08826	Hot-End Orifice
7	10C08827	Plug
8	10C23030	Vortex Tube Assembly
9	10C08968	Narrow Spacer
10	10C08967	Venturi
11	10C08968	Wide Spacer
12	10C08829	Threaded Retainer
13	10C08869	1/4" Male Elbow
14	10C08974	Belt Clip
15	10C08830	Lower Valve Plate
16	10C08831	Upper Valve Plate
17	10C08832	Support Washer
18	10C08833	Outlet Fitting
19	10C08834	Body Housing
20	10C08835	Control Lever
21	10C08844	Spring
22	10C03870	Machine Screw, 6-32 x 1/4"
23	10C03072	Set Screw, 1/4-NC x 1/2"
24	10C08836	Spacer
25	10C08838	Valve Plate Pin
26	10C03886	Machine Screw, 10-24 x 1/2"
27	10C04430	Belt
28	10C08981	Heat Shield

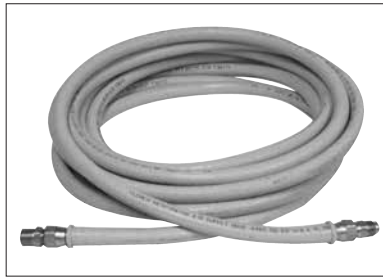
## PART NUMBERS & SCHEMATICS

Figure 5: Apollo Climate Control Hot/Cold Tube with Belt



## BREATHING LINE




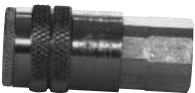
Part Numbers	CLEMCO BREATHING LINE					
	Compressed Air	Use with Ambient Air Pump	Breathing Line I.D.	Length	Installed Couplings	
					10BV11 Male x Male	10BV13 Male x Male
10C04397	X		3/8"	25 Feet	X	X
10C04415	X		3/8"	50 Feet	X	X
10C04398	X		3/8"	100 Feet	X	X
10C22510		X	1/2"	50 Feet		
10C21413		X	1/2"	100 Feet		



10C04397  
10C04415  
10C04398



10C22510  
10C21413

Part Numbers	BREATHING LINE HEX NIPPLES AND QUICK-DISCONNECT COUPLINGS	
	10BV12	3/8" Male NPT Pipe Thread to 1/4" Male Hose Adapter Hex Nipple
	10BV13	3/8" Male NPT Pipe Thread to 3/8" Male Hose Adapter Hex Nipple
	10BV11	3/8" Male x 3/8" Male Hose to Hose Connector Hex Nipple
	10BV14	1/4" Female Quick-Disconnect Coupling, Shut-Off with 1/4" Female Pipe Thread

## MAINTENANCE NOTES

[illegible]

## GLOBAL HEADQUARTERS

- 3425 East Locust Street  
Davenport, IA 52803

ph: 800.BLAST.IT (800.252.7848)

ph: 563.324.2519

fax: 563.324.6258

## GULF STATES HEADQUARTERS

- 701 East Boulevard  
Deer Park, TX 77536

ph: 800.BLAST.IT (800.252.7848)

ph: 281.930.0905

fax: 281.542.0736

## REGIONAL BRANCH OFFICES

- **Iowa**  
Davenport
- **Louisiana**  
Harvey  
Lafayette
- **Ohio**  
Youngstown
- **Texas**  
Beaumont  
Corpus Christi  
Deer Park



*Experience, Trust, Service*

ABRASIVES

BLASTING

COATING

ENGINEERED SYSTEMS

RENTAL

SAFETY

SERVICE & REPAIR

## 40+ NATIONWIDE SHIPPING LOCATIONS



★ Marco Regional Branch Offices  
and Shipping Locations

● Direct Shipping Locations

## CONTACT MARCO

**800.BLAST.IT**  
**(800.252.7848)**

**563.324.2519**

**FAX: 563.324.6258**

**WWW.MARCO.US**  
**SALES@MARCO.US**